

CERTIFICATE OF LOCATION OF GOVERNMENT CORNER

NORTH QUARTER Corner of Section 5, Township 106, Range 39, 5TH P.M.

STATE OF MINNESOTA, County of MURRAY

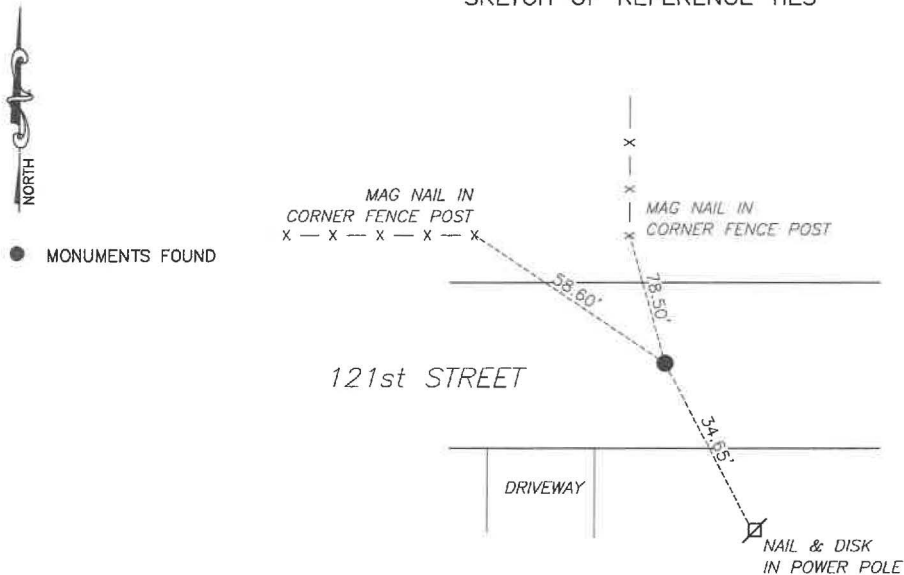
At the corner location shown on the sketch:

☒ On 7/20/2024 found a 5/8" iron with seal #23008 over top of the stone.
DATE

☒ left monument as found, ☐ lowered monument, ☐ removed monument (explain)

☐ On _____ placed a _____
DATE

SKETCH OF REFERENCE TIES



Murray County
Coordinate System NAD83 (1996)
N: 163460.395
E: 556245.409

WGS84
LAT: $44^\circ 01' 18.9390''$
LON: $-95^\circ 33' 10.2914''$

Statement of evidence relative to this corner location is on back of page.

I hereby certify that this document and the data contained herein was prepared by me or under my direct supervision.

Daniel L. Bueltel
Daniel L. Bueltel
License No. 43844

3/12/2025
DATE

MAR 13 2025

Karen Bram

MURRAY COUNTY RECORDER

Statement of Evidence

NORTH QUARTER CORNER SECTION 5, T106N, R39W of the 5th P.M.

In September 1858, W.J. Neely surveyed the east township line.

In July of 1861, J.W. Myers surveyed the north, south, and west township lines.

In August of 1861, Wellman & Smoot subdivided the township.

County records from June 6, 1895 show a post and pits located at the corner and a 12"x12"x24" stone was placed at the location.

On August 16, 2007 Perry Zieske, LS 23008, located a 11"x15" stone, accepted the stone as the monument and set an iron with seal #23008 over top of the stone.

September 27, 2020, Westwood Professional Services found iron with LS23008.

On July 20, 2024 Bueltel-Moseng Land Surveying found a iron with seal #23008 over top of the stone.